



# Lane/5000

Create new retail checkout experiences with a world of Business Apps

- Enhance the purchasing experience by combining a large touchscreen display within a compact consumer-facing terminal
- Accelerate checkout offering electronic signature and boosting NFC acceptance
- Engage consumers, combining payments with a world of Business Apps
- Leverage a terminal designed for the most demanding retail environments



ingenico  
GROUP

The most advanced designed-for-retail terminal, Lane/5000 combines payment acceptance and new services to reinforce consumer engagement.



#### Highest security

The Lane/5000 is PCI-PTS 5.x certified. Its Telium TETRA OS uses the latest cryptographic schemes with future-proof key length. Additional anti-theft systems, such as Kensington locks, strengthen security.

#### All payment options

The Lane/5000 enables NFC couponing and wallet use cases, in addition to EMV Chip & PIN, Swipe & Sign and contactless.

#### User-friendly and intuitive interface

Featuring enriched multimedia capabilities and a 3.5" color touch screen, Lane/5000 enhances interactivity with consumer during payment and business Apps operations.

#### Designed for retailers

Conceived for intensive retail usage, the Lane/5000 features a durable signature - capacitive screen, heavy duty magnetic stripe and smartcard readers optimized for transaction speed, and a multipoint connector for easy integration.

#### Built-in data capture capabilities

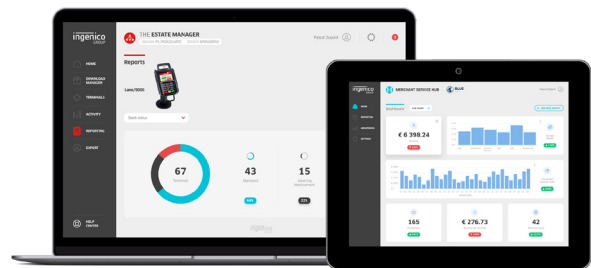
With its camera, Lane/5000 enables alternative payment schemes and unlimited possibilities for business Apps.

#### Seamless NFC payment experience

The Lane/5000 makes NFC acceptance easy. Its dedicated and visible reader zone is enhanced with smooth backlit glass. This ergonomic reader offers consumers a seamless experience while improving retailer efficiency.

#### Electronic signature

The Lane/5000 features durable signature capture capabilities for electronic payments, receipt storage and new business applications such as contracts, warranty programs and enrollment.



NAME			Lane/5000
<b>Processor</b>	Application & Control processor	Cortex A5	●
<b>Memory</b>	Internal External	512 MB Flash, 512 MB RAM MicroSD up to 32GB	● Option
<b>OS</b>		Telium TETRA	●
<b>SAM</b>		3	Option
<b>Card readers</b>	Magstripe Smart card Contactless	ISO 1/2/3, 500K lifespan Dual Head EMV Level 1, 500K lifespan EMV Level 1 compliant, Felica	● Option ● ●
<b>Display</b>	Colour	3.5" backlit, HVGA (480x320 pixels)	●
<b>Touchscreen</b>	Resistive Capacitive	Finger & stylus (300K lifespan signature) Finger & stylus (1000K lifespan signature)	● Option
<b>Keypad</b>		15 keys, raised marking, backlit	●
<b>Audio</b>	Buzzer Audio Jack Speaker	Stereo Mono	● Option Option
<b>Video</b>	Video accelerator	H264 codec	●
<b>Data Capture</b>	Camera	5M pixels autofocus	Option

<b>Terminal connectivity</b>	Wired Wireless	Ethernet 10/100 base T Bluetooth Class 2 Wi-Fi	● Option Option
<b>Terminal connections</b>	USB Serial	USB Host 2nd USB Host USB Slave 1 RS232	● Option ● ●
<b>Power supply</b>	Powered USB Powered RS232 Powered Ethernet External power supply	12V (USB retail) 12V PoE 802.3af compliant	● ● Option Option
<b>Stand Mounting</b>		Universal Payment Mount	Option
<b>Terminal size</b>		189x111x48 mm (7.4x4.3x1.9")	●
<b>Weight</b>		350 g (12.3 oz)	●
<b>Environment</b>	Operating Temperature Storage Temperature Operating Humidity	0°C to +50°C (32°F to 122°F) -20°C to +70°C (-4°F to 131°F) 85% non-condensing at +40°C (104°F)	● ● ●
<b>Accessory</b>	Privacy shield Stylus kit	PCI compliant EPC+ compliant*	● Option Option
<b>Security</b>		PCI PTS 5.x & 4.x online & offline certified	●

\* This locally compliant pinshield is not PCI certified, it is used where local regulations overruled PCI



www.ingenico.com

**ingenico**  
GROUP